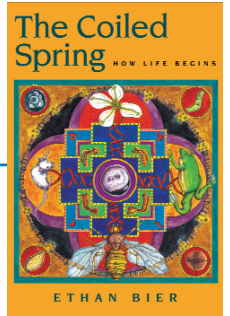


The Coiled Spring

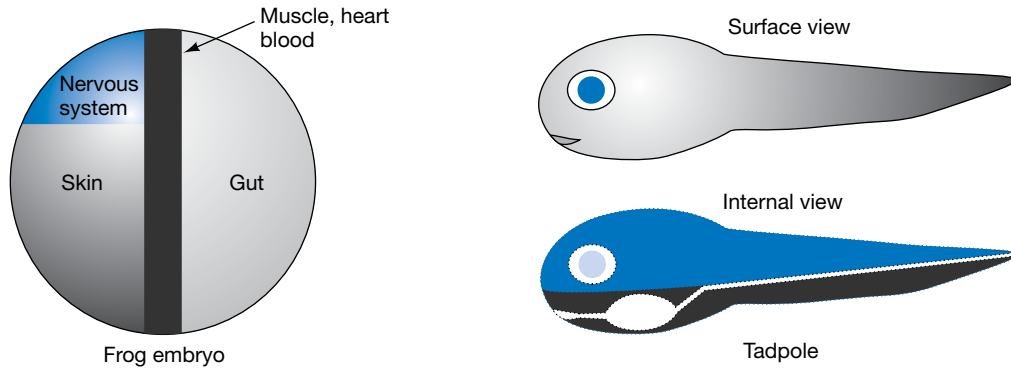
HOW LIFE BEGINS

Ethan Bier

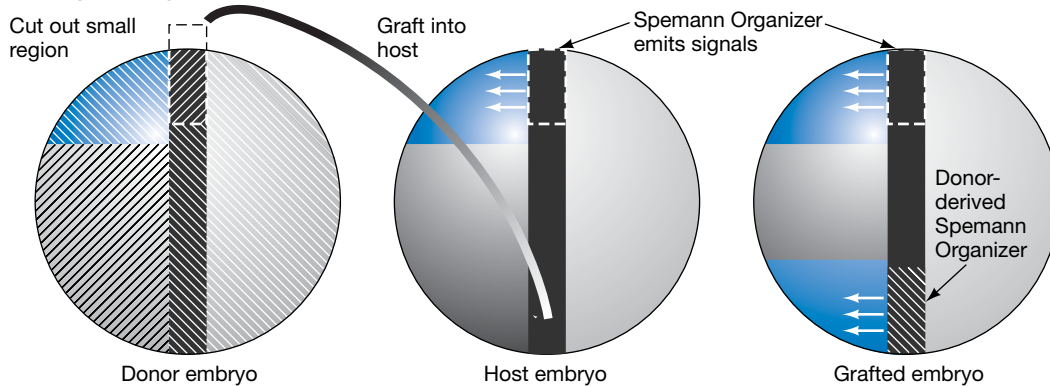
University of California, San Diego, La Jolla, California



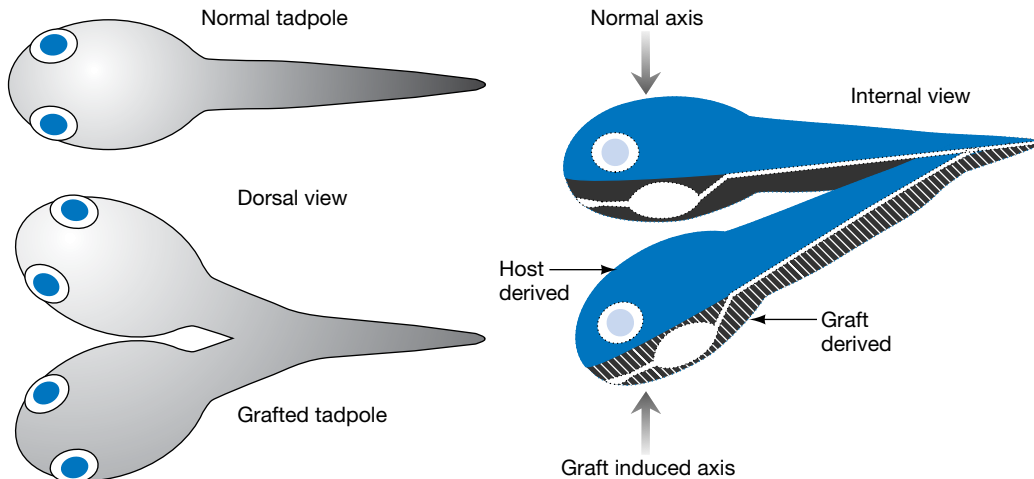
1. How the early frog embryo maps onto the tadpole



2. Mangold's organizer transplantation experiment



3. Organizer grafts induce a second axis



The Coiled Spring: How Life Begins, © 2000 by Cold Spring Harbor Laboratory Press

FIGURE 1.11. The presence of organizing centers—the Mangold–Spemann experiment.



COLD SPRING HARBOR LABORATORY PRESS
www.cshlpress.com