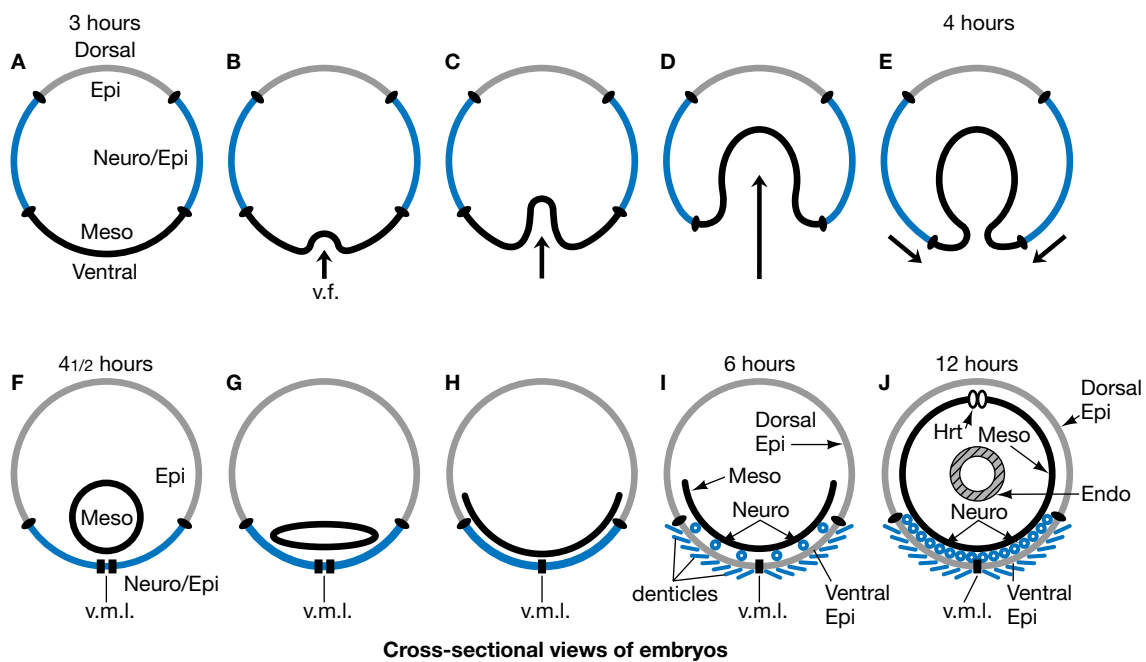
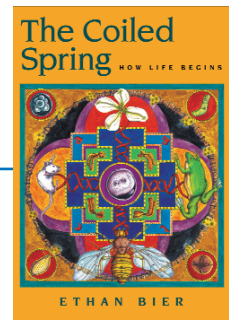


The Coiled Spring

HOW LIFE BEGINS

Ethan Bier

University of California, San Diego, La Jolla, California



The Coiled Spring: How Life Begins, © 2000 by Cold Spring Harbor Laboratory Press

FIGURE 3.1. Gastrulation of fruit fly embryo. Epi = epidermis; Meso = mesoderm; Endo = endoderm; v.m.l. = ventral midline; v.f. = ventral furrow; Neuro = neural precursor cells or neuroblasts.

